



Schneider  
Brot



1/8

СТИКЕРЫ





# Business Insights through Smart Devices, and Software for Informed Decisions

Hersch Joshi  
Schneider Electric

Life Is On

**Schneider**  
Electric

# Digital disrupts Efficiency & Sustainability

**3x IoT**

IoT connections 2018-2025 (\*GSM)

**>5x Big Data**

generated data from 33 ZBs today to 175 ZBs by 2025 (\*IDC, 2018)

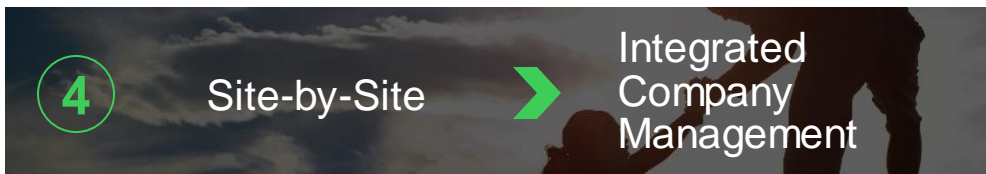
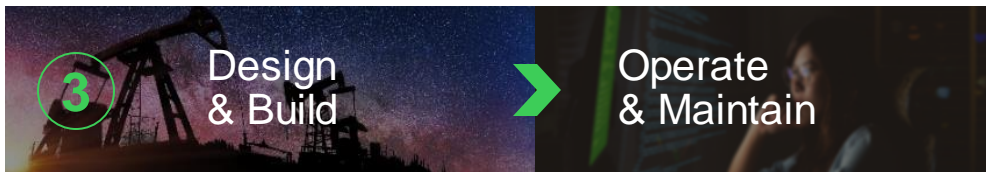
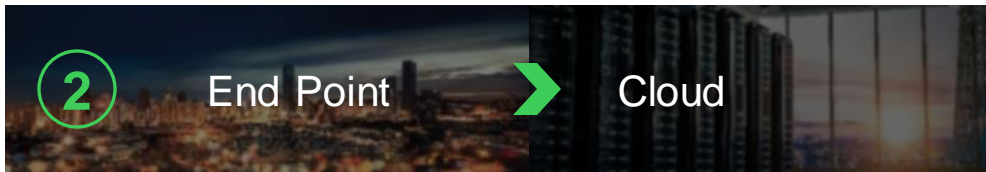
**6x AI**

worldwide spending on cognitive and AI systems btw 2017 & 2022

(International data corporation)

Life Is On

**Schneider**  
Electric



4x  
Efficiency

Life Is On

Schneider  
Electric

**Digital**  
builds a  
**smart**  
**green**  
**future**

**>30%**

**Digital Efficiency**

in buildings & industries

**>70%**

**Circularity**

Energy Efficiency with steel recycling

**x2**

**Electricity**

in final energy mix

**x6**

**Renewable Electricity**

from Wind/Solar by 2040

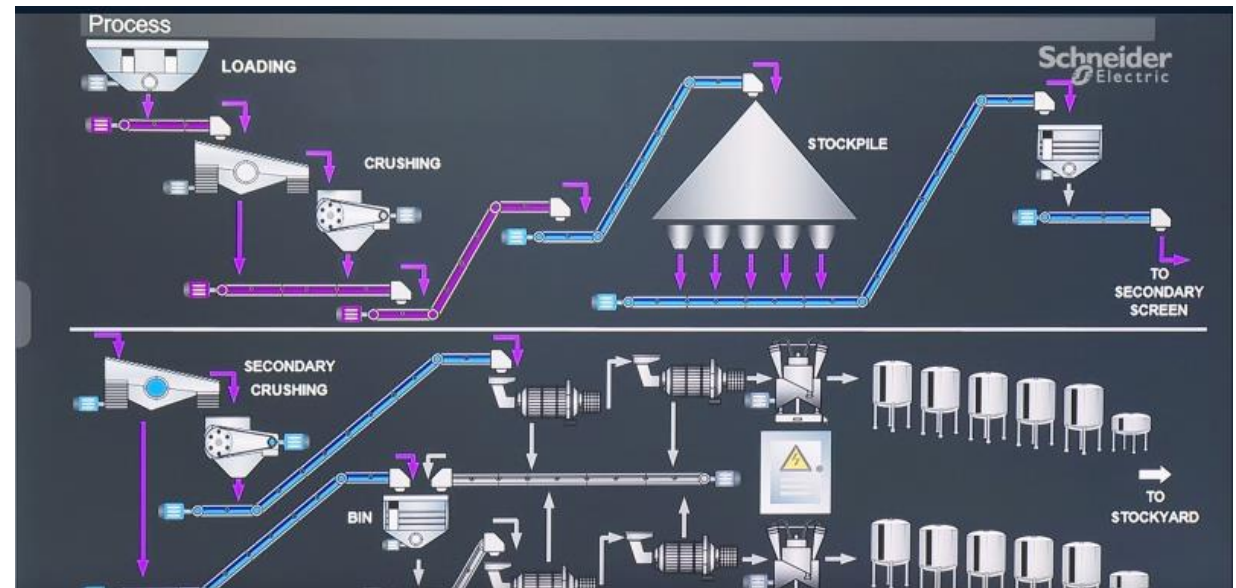
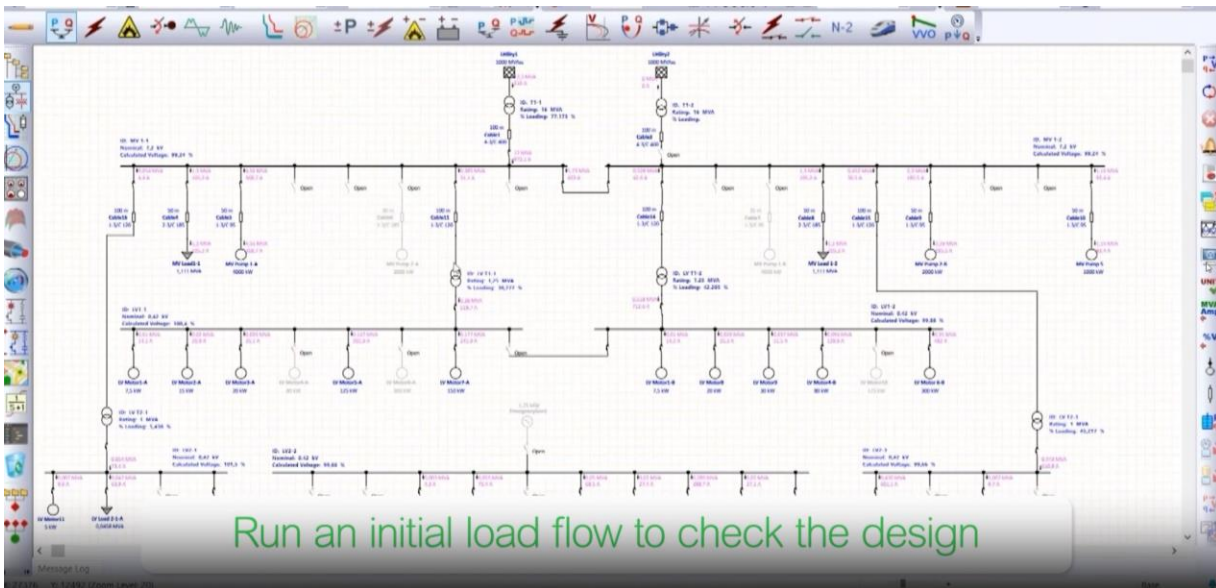
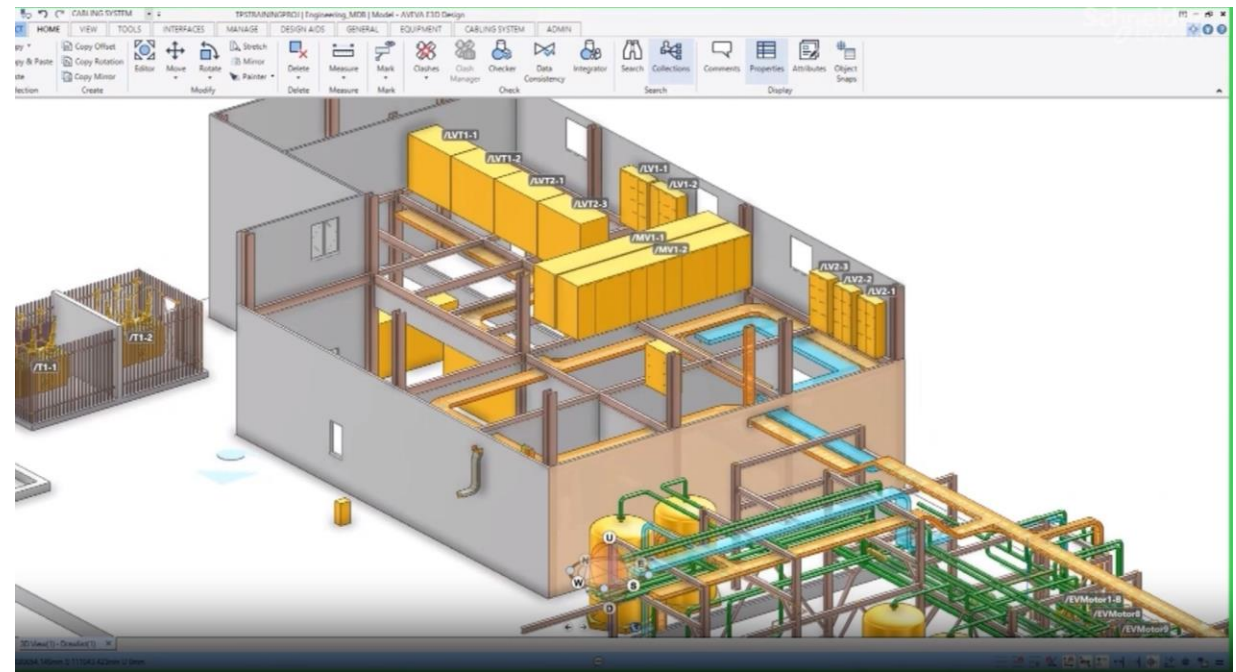
Life Is On

**Schneider**  
Electric









## Alarms

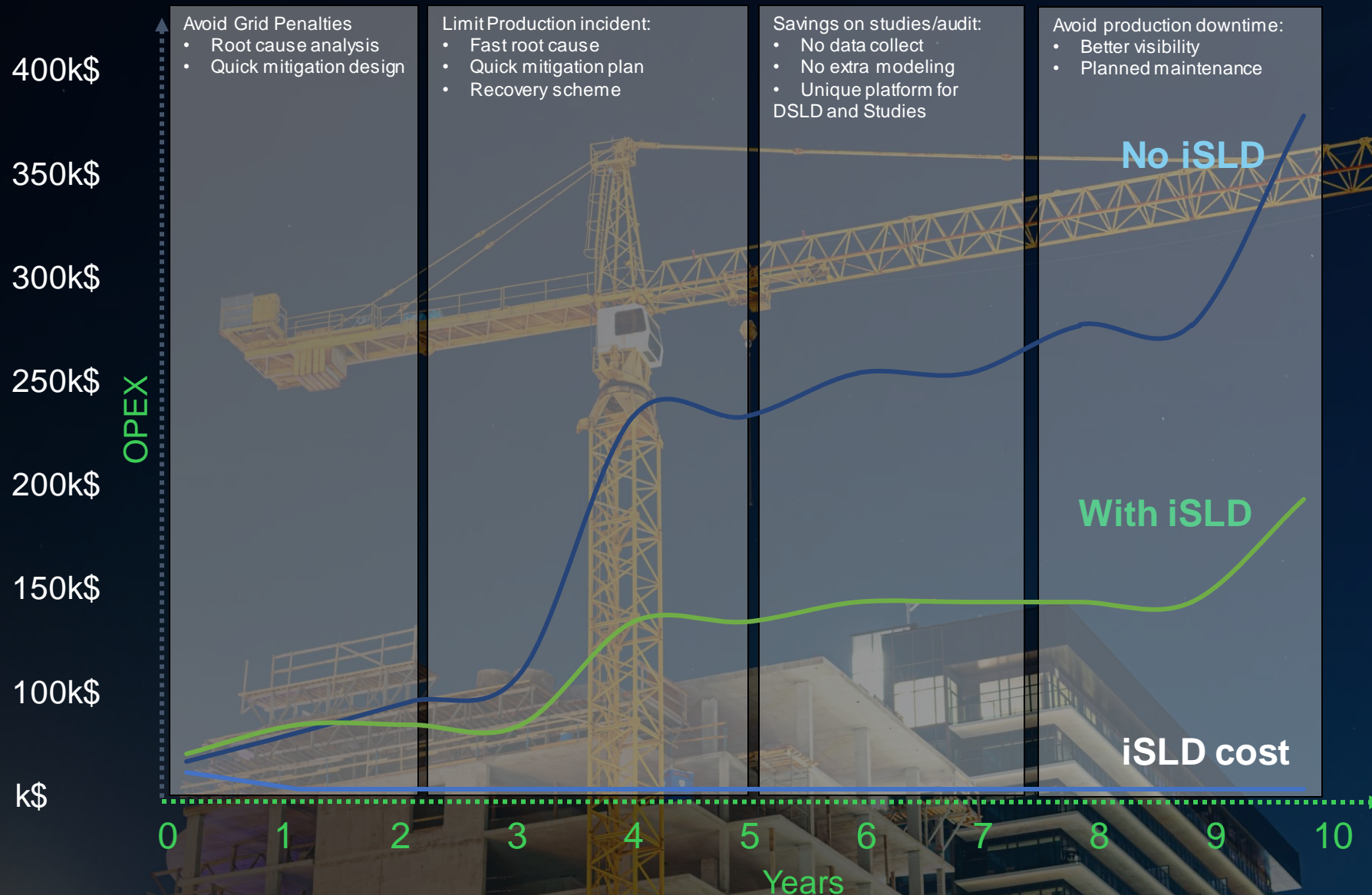
Asset	Alarm State	Runtime Status	7 Day Event History	Days until failure	Warnings	Latest Alarm
Smart Mine 1				1066	721	08/09/2020 08:49:21.179
Process				586	369	08/09/2020 08:49:21.183
Crushing				397	221	08/09/2020 08:49:21.184
C-XXX1 Crusher				191	117	08/09/2020 08:49:21.185
C-XXX1 Crusher Sensor 1				191	117	08/09/2020 08:49:21.186
C-XXX1 Conveyors				103	52	08/09/2020 08:49:21.186
C-XXX1 Conveyor 1				103	52	08/09/2020 08:49:21.186
C-XXX1 Screener				103	52	08/09/2020 08:49:21.186
C-XXX1 Screener Sensor 1				103	52	08/09/2020 08:49:21.187
SAG Mills				125	89	08/09/2020 08:49:21.187
Cyclones				64	59	08/09/2020 08:49:21.187
Flotation				290	200	08/09/2020 08:49:21.187
Vehicles				210	152	08/09/2020 08:49:21.187

Predictive Notifications





# Intelligent Single Line Diagram “iSLD” provides a step up in OPEX efficiency



## Save up to 54% of OPEX:

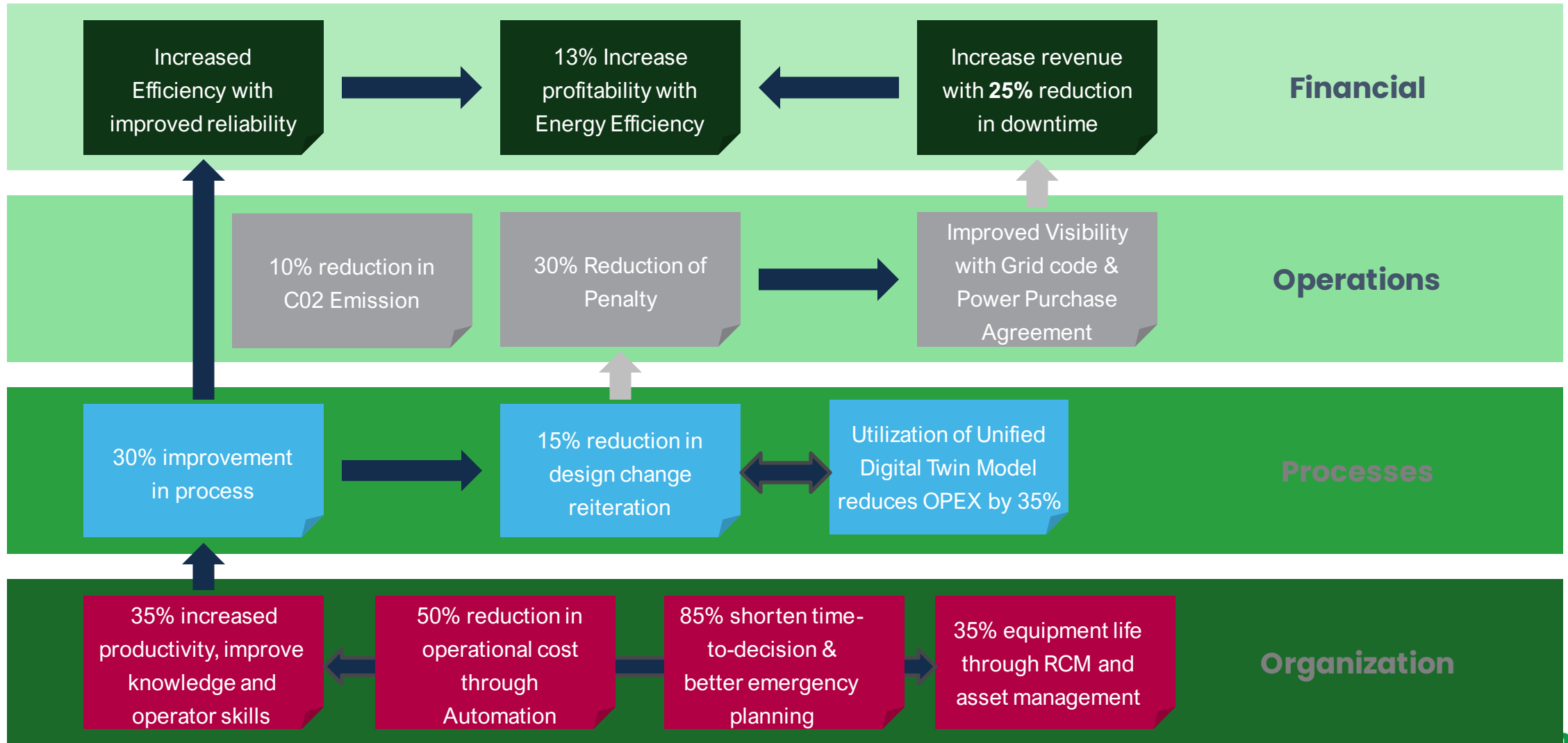
- Audit/Calculations
- Plant downtime
- Data Collect
- Grid and authority compliance

## Open doors for extra savings:

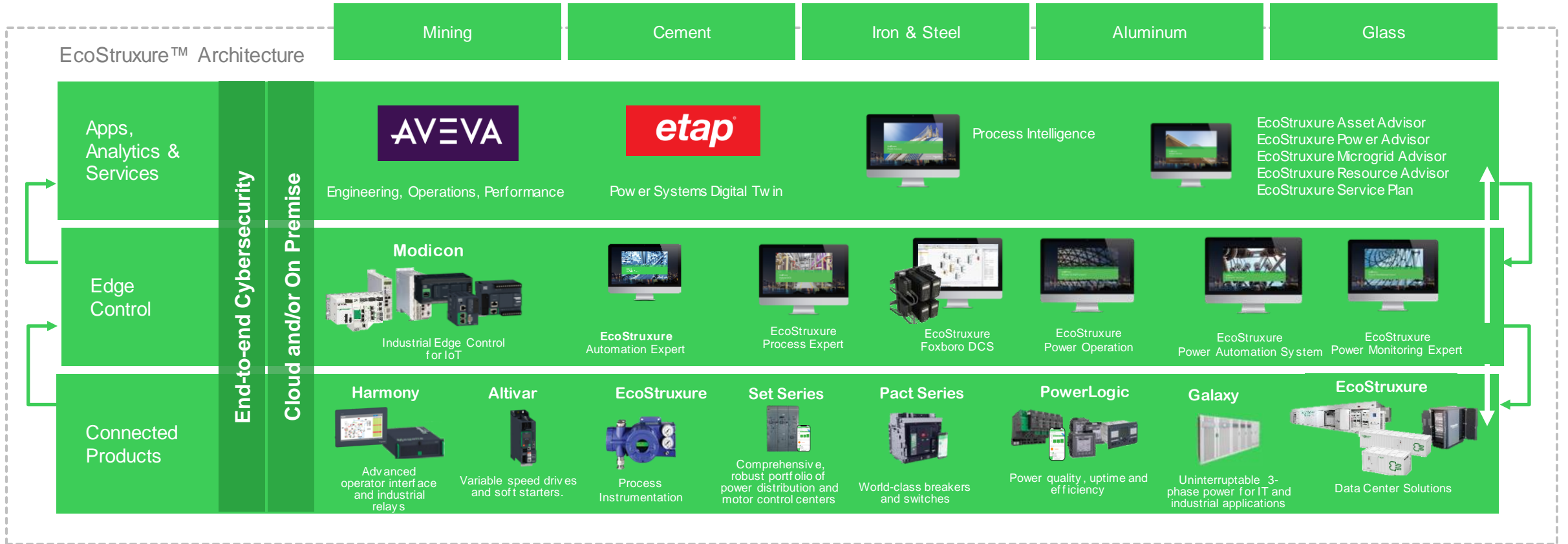
- Modernization optimization
- Improve runtime connecting iSLD to real time data
- Carbon footprint reduction
- Energy Efficiency

**Build a trusted partnership** with SE power systems expertise consulting team

# Indirect Savings – Efficiency & Productivity



# EcoStruxure™ Stack



Life Is On





# 23 Hero Offers in 2023 | 20 EM, 2 IA, 1 EM+IA

## Home & Distribution

**Smart Home Monitoring & Edge Control** Q2'23

Controllable Relays & Breakers

Square D X & XD Series Wiring Devices



**Acti9 Active** LIVE

MCB for space optimisation in the electrical distribution



**Advanced Circuit Protection** LIVE

CAFI and GFI



**Wiser Home Energy Management Solution with Smart Home Solution** LIVE

Energy Management Solution for Homes



**EVLink and EcoStruxure for eMobility** LIVE

EV charging solutions for Homes, Buildings, Fleets


Launched



**Prosumer System (US)** Q2'23

Inverter, Battery, Backup Switch Square D Energy Center evolution L2 Residential EV Charger\*

\*Saturn, Horizon, Aurora/Artemis projects



## Secure Power

**APC™ Smart UPS** Q1'23

Ultra & Modular Ultra Smart UPS




**Easy UPS 3-Phase Modular** Q1'23

Launched



**EcoCare**

EcoStruxure Service Plan (Q2 2021 > Q3 2023)



## Power Systems & Services

**AirSeT**

SF<sub>6</sub>-free MV switchgear

GM AirSeT RM AirSeT SM AirSeT

Q2'23 Q4'22 Launched



**EvoPacT** Q2'23

New Generation of Intelligent MV Switchgear

Launched



**MCSeT Active** Q2'23

Primary Air-insulated switchgear natively connected to the cloud



**EcoConsult** LIVE

Electrical Digital Twin



## Digital Energy

**EcoStruxure Building Operation** Q1'23



**EcoStruxure Energy Hub** LIVE



**EcoStruxure Grid Operation** LIVE

Launched



**EcoStruxure Microgrid + EcoStruxure Microgrid Flex** H2'23



**EcoConsult** LIVE

15 Products  
9 Edge  
7 Apps, Analytics & Services  
3 Systems  
9 Monetized Software

## Power Products

**BlokSeT Lean / Okken Lean** Q3'23

BlokSeT Lean Okken Lean



**FlexSeT**

Switchboard Launched

ECC Q3'23



**TeSys and Altivar (MoMA)**

TeSys Island with TeSys Predict H2'23

TeSys Tera Q1'23

Altivar Soft starter ATS130 Q1'23



● Connected Product ● Edge Control ● Apps, Analytics & Services

## Industrial Automation

**EcoStruxure Automation Expert** Q2 & Q4'23

Software-centric industrial automation system

Launched



**EcoStruxure Machine** Q2 & Q4'23

Lexium MC12 Multi Carrier, EcoStruxure Machine Expert Twin



**Energy Management Software**



**Advanced Electrical Design for Autodesk® Revit®** Q3'22

Life Is On

**Schneider Electric**

\*IA = Industrial Automation  
EM = Energy Management

# Asset management demands a new approach to maintenance practices

## Corrective

### Run to fail

- I can only react when failures happen
- I cannot prevent downtimes
- I need to replace my equipment more often
- Urgent intervention is expensive: higher man rate, higher travelling fees, less negotiation levers...

## Preventive Time-based

### Fixed maintenance cycles and tasks

- I can hardly anticipate failures and mitigate risk
- Attempting to prevent more downtimes is time consuming & costly (on site actions)

## Preventive Condition-based

### Dynamic maintenance cycles and tasks

- I prevent asset failure & downtimes
- I optimize my maintenance cycles & tasks

## Predictive Maintenance

### Just-in-time maintenance tasks

- I predict asset failure & downtimes
- I minimize my maintenance actions : just enough to avoid failure occurrence

Past practices

Service Plan

Future Practice



Life Is On

**Schneider**  
Electric

# Empower all to make the most of our energy and resources, bridging **progress and sustainability for all**

We play on both sides of the equation

Leading by example  
in **our ecosystem**



Being part of the solution  
for **our customers**

Life Is On

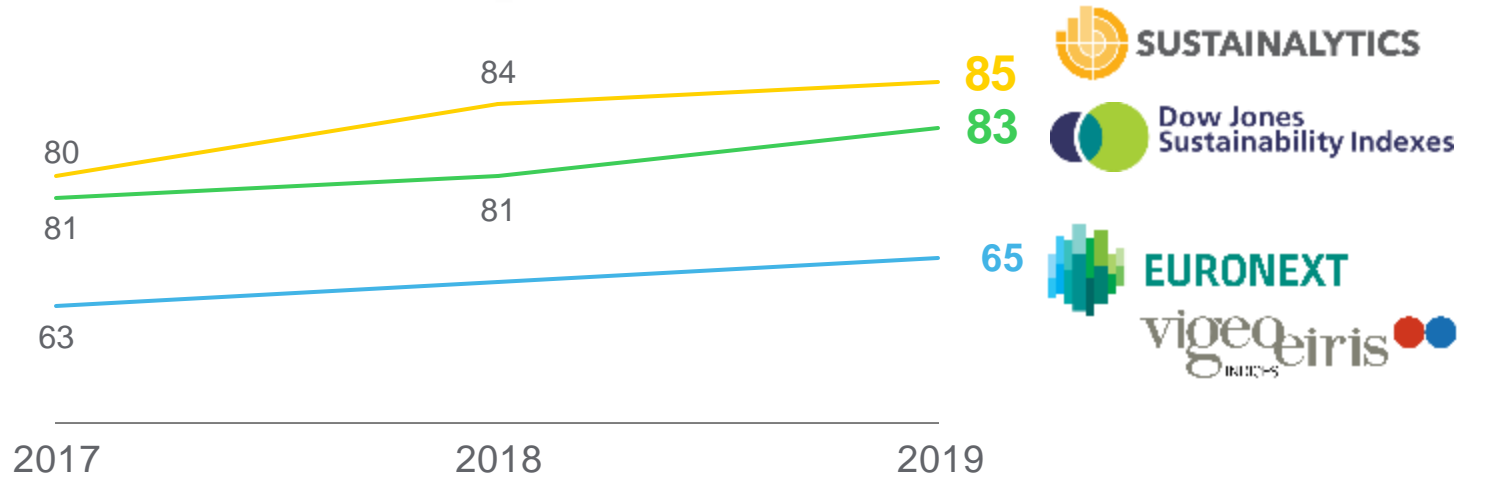
**Schneider**  
Electric



# Sustainability Recognition



2021's most sustainable corporation in the world



**A List**  
(Climate)  
9 years in a row

**MSCI**  
ESG RATINGS

**AAA**  
9 years in a row



Included since inception (2018)

Life Is On



# Leadership with deep domain expertise

 **20**

of the **oil & gas**  
companies

 **9**

of the 10 largest  
**mining, metals  
& minerals**  
companies

 **11**

of the top brands  
within **food &  
beverage**

 **40k**

**water &  
wastewater**  
installations in  
**120** countries

 **1** Mil+

**buildings** including 3 of  
the top 5 **hotel** chains  
and approx. 40% of the  
world's **hospitals**

 **10**

of the world's top  
electric **utilities**

 **4**

of the top 4  
**hyper-scale  
cloud** providers

 **8**

of the top  
10 **packaging  
machine** builders

 **10**

of the biggest  
**automotive**  
companies globally

 **1**

of the top 4  
**semiconductor  
manufacturers**  
recognized us as  
2018 Preferred  
Quality Supplier

 **10**

of the world's largest  
**airports**

Life Is On

**Schneider**  
Electric

# How can we help!



**Hersch Joshi**

E [hersch.joshi@se.com](mailto:hersch.joshi@se.com)

Life Is On

**Schneider**  
Electric



Life Is On

**Schneider**  
Electric